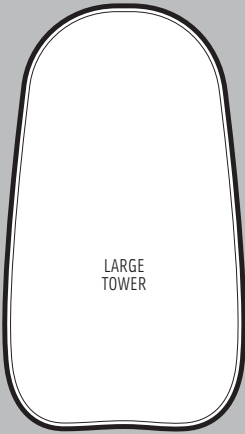
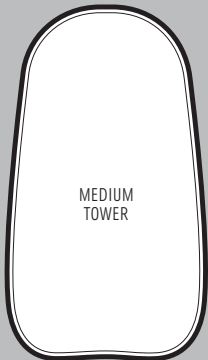


PROMOSHOP TOWERS



LARGE TOWER

- LARGE TOWER
- 2.7 m (8' 10")
 - 1.2 m (4' 0")
 - 8.1 kg (17.6 lb)



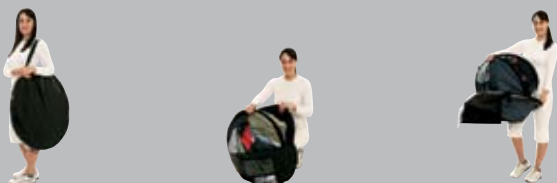
MEDIUM TOWER

- MEDIUM TOWER
- 2.1 m (6' 10")
 - 1.2 m (4' 0")
 - 5.3 kg (11.7 lb)



PROMO SHOP

- PROMO SHOP
- 2.1 m (6' 10")
 - 1.2 m (4' 0")
 - 6.0 kg (13.2 lb)



Our impressive Large and Medium Towers give your brand all-round greater exposure. These are perfect for indoor and outdoor use and are effective when illuminated.

The Promo Shop gives you an instant booth and is ideal for product launches, sponsorship events and in-store sampling. Inner pockets are available as an optional extra and allow you to store brochures or samples. There is also room for a small table or fridge/freezer.



UK Design 2087105, German Design 401 06 0916, RSN Design A2000086,